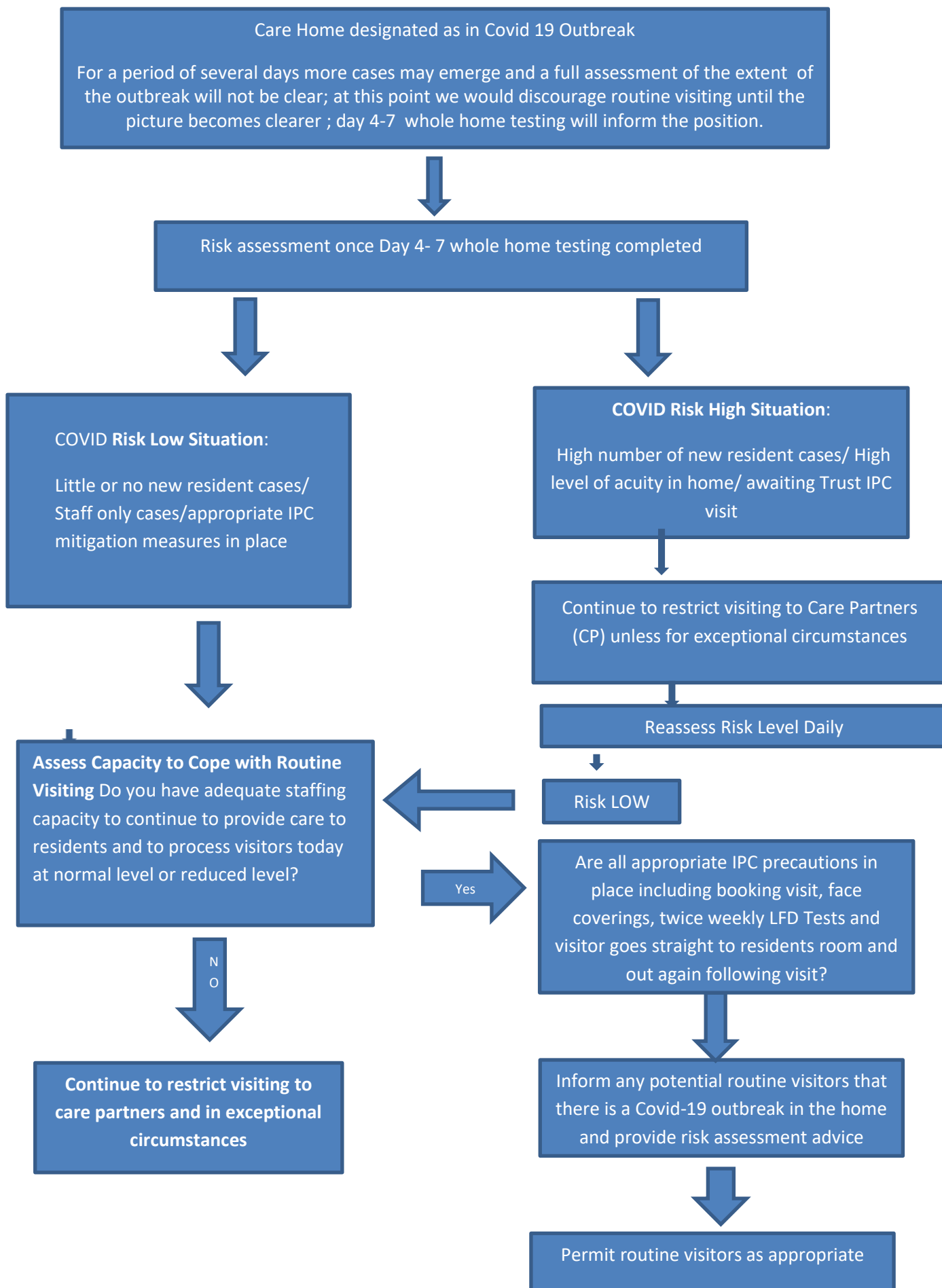


Visiting In COVID-19 Outbreak: Guidance Algorithm (Issue 2 Updated May 2022)



To note decision to permit routine visitors during a COVID-19 Outbreak will be based on ongoing review

Visiting In COVID-19 Outbreak: Guidance Algorithm (Issue 2 Updated May 2022)

Implementation

General visiting should be discouraged until a care home declared in outbreak has received results from Day 4 to 7 testing; this will confirm the extent of the outbreak and inform decision making in relation to facilitating general visiting using the algorithm. To note during this time Care Partners can continue to visit and visiting in exceptional circumstances including end of life should be facilitated.

On receipt of the above results the Acute Response team in the Duty Room will work through the algorithm with the care home to inform a risk assessed decision in relation to facilitating general visiting within the care home. To note this may be full visiting or some level of restriction depending on the risk assessment.

In the event that the assessment identifies a **Low Risk** situation the care home should advise residents and families of the level of general visiting that can be facilitated while ensuring all those who visit are aware of the risk to themselves of contracting COVID -19 and the need to adhere to all IPC measures.

Where the outbreak is identified as a **High Risk** situation visiting will remain restricted to Care Partners and in exceptional circumstances including end of life.

The position in relation to general visiting should be reviewed on a daily basis with a focus on facilitating general visiting where possible in order to maintain access to family life for all residents.

To note decision to permit routine visitors during a COVID-19 Outbreak will be based on ongoing review